



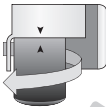
Installation Quick Start Guide for WSM-1/WSL-1

Important Installation Instructions

1. Locate the existing filter. It will be located behind the light cover above the top shelf on the right hand side. Remove the top shelf. This will give you more room to remove and install the new filter.

2. Remove the light cover by pressing the release clip on the bottom of the cover and pulling the cover out and up to remove the light cover.

3. Locate existing filter and remove it by turning it counter clockwise as shown in the graphic.



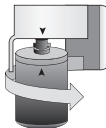
4. Remove sanitary cap from new filter. Check the black o-rings making sure they are both on and not damaged (torn or cracked).



5. Locate the Start arrow found at the top of the instruction label on the back side of the filter. Align the Start arrow with the arrow on the refrigerator filter head.

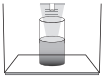


6. Apply slight upward pressure and rotate the filter clockwise until the Stop arrow on the front of the filter label is aligned with the arrow on the refrigerator filter head. Ensure filter is fully installed in the refrigerator filter head a full 1/4 turn. This is required to activate the internal valve inside the refrigerator. If the filter is not turned 1/4 turn the valve will not fully open and may cause the water flow to be slow, or even cause the valve to make a chattering noise during use.

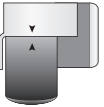


7. Dispense water into a glass looking for good water flow. If flow is slow, remove and reinstall filter ensuring that the filter is turned in a full 1/4 turn.

Note: Initial flow rate may be slower than expected. Full flow rate should be restored within 24-36 hours.



8. Check filter one more time for any leaks.



9. Replace the light cover and top shelf.

Specifications

Flow Rate:	.5 gpm (1.89 lpm)
Operating Temperature:	33°-100°F (0.6°-38°C)
Operating Pressure:	30-100 psi (207-689 kPa)
Life:	6 Months or 300 gallons (1,136 liters)



This filter is Tested and Certified by NSF International against NSF/ANSI Standard 42 for the reduction of chlorine taste and odor.



This filter is Tested and Certified by IAPMO P&T against NSF/ANSI Standards 42, 53 & 372, for the reduction of Chlorine taste and odor, Lead, Cyst, VOC's, Mercury, Asbestos. Refer to Performance Data Sheet for complete list of claims.

For further questions or assistance please call (866) 218-8473.

Warning: To reduce the risk of property damage from water leakage, the filter bypass plug **MUST** be used when a filter replacement cartridge is not installed. For cold water applications only. Do not use with water that is microbiologically unsafe or of unknown quality without adequate disinfection before or after the system.

Protect from freezing. REPLACE FILTER EVERY 6 MONTHS, OR IF BAD TASTE OR ODOR OCCUR.
Systems Certified for cyst reduction may be used on disinfected waters that may contain filterable cysts.

Installation shall comply with applicable state and local regulations.

The risk associated with small parts can cause choking if swallowed.

Keep children away from small parts during the replacement of the water filter.

Aquamor, LLC, 42188 Rio Nedo, Temecula, CA
www.watersentinelilters.com